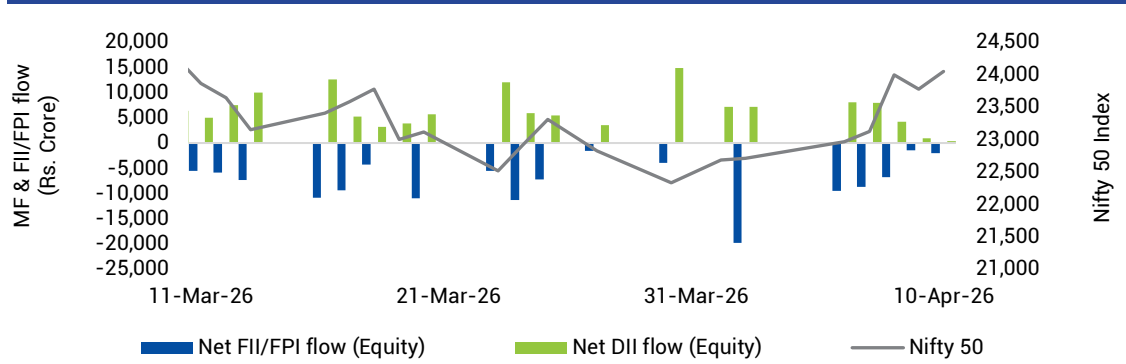


Macro Economic Release

Indicators	Actual	Consensus	Previous
India Manufacturing PMI (Mar 2026)	53.9	NA	56.9
India Services PMI (Mar 2026)	57.5	NA	58.1
India Composite PMI (Mar 2026)	57.0	NA	58.9
Fiscal Deficit % of BE (Feb 2026)	80.38	NA	62.97

Source: Refinitiv

FII and DII Investment vs Nifty 50



Source: NSDL, SEBI & NSE

Indian Equity Market Performance

Broad Indices	10-Apr-26	% Change (WoW)	% Change (YoY)	% Change (YTD)
BSE Sensex	77,550	5.77	5.01	-9.00
Nifty 50	24,051	5.89	7.37	-7.96
BSE 100	25,321	6.19	7.94	-7.40
Nifty 500	22,347	6.73	9.78	-6.39
Nifty Midcap 100	57,844	7.76	16.66	-4.37
Nifty Small cap 100	16,840	7.60	10.38	-4.93

Sector Indices	10-Apr-26	% Change (WoW)	% Change (YoY)	% Change (YTD)
BSE AUTO	58,714	10.30	30.06	-6.14
BSE Bankex	62,985	8.58	9.56	-5.65
BSE CD	58,203	9.16	8.74	-3.00
BSE CG	72,181	8.77	25.94	7.55
BSE FMCG	17,831	4.35	-10.61	-12.36
BSE HC	42,619	3.02	7.73	-2.70
BSE IT	29,902	2.10	-6.62	-18.60
BSE METAL	40,765	7.80	53.15	10.74
BSE Oil & Gas	26,681	4.01	10.86	-7.06
BSE Power	7,287	7.89	14.81	12.04
BSE PSU	21,286	5.75	21.67	3.49
BSE Realty	5,890	12.86	-2.46	-13.47
BSE Teck	15,606	2.71	-1.97	-15.69

Source: BSE & NSE

Indian Debt Market Indicators

Broad Indices	10-Apr-26	Week Ago	Month Ago	6 Months Ago	Year Ago
Call Rate	5.05%	5.20%	5.07%	5.58%	5.91%
T-Repo	4.79%	4.92%	4.80%	5.47%	5.76%
Repo	5.25%	5.25%	5.25%	5.50%	6.00%
Reverse Repo	3.35%	3.35%	3.35%	3.35%	3.35%
3 Month CP	6.25%	7.40%	7.27%	5.93%	6.58%
1 Year CP	7.10%	7.15%	7.01%	6.40%	7.00%
3 Month CD	5.94%	6.55%	7.42%	5.93%	6.48%
1 Year CD	6.91%	7.35%	7.01%	6.33%	6.96%

Source: CCIL, Refinitiv

Source: CCIL, Refinitiv * As on Apr 03, 2026; ** As on Mar 27, 2026; @ As on Mar 06, 2026; @@ As on Oct 10, 2025; @@@ As on Apr 04, 2025

10 - Year benchmark G-Sec Movement



[1] Data as on 09 Apr, 2026

Macro Economic Update

- The Monetary Policy Committee (MPC), in its first bi-monthly monetary policy review for FY27, decided to keep the policy repo rate under the liquidity adjustment facility (LAF) unchanged at 5.25%. Consequently, the standing deposit facility (SDF) rate remains at 5.00%, while the marginal standing facility (MSF) rate and the Bank Rate remain at 5.50%. The MPC also decided to continue with the neutral stance.
- The RBI has projected CPI inflation at 4.6% in FY27, with quarterly readings of 4.0% in Q1, 4.4% in Q2, 5.2% in Q3, and 4.7% in Q4, based on the assumption of persistently elevated energy prices amid West Asia tensions and possible El Niño conditions. Core inflation is pegged at 4.4% for FY27 and is lower when precious metals are excluded, suggesting that underlying inflationary pressures are likely to remain contained.
- The RBI has projected real GDP growth at 6.9% in FY27, with quarterly growth estimates of 6.8% in Q1, 6.7% in Q2, 7.0% in Q3, and 7.2% in Q4.
- India's Services Purchasing Managers' Index (PMI) eased to 57.5 in Mar 2026 from 58.1 in Feb 2026, indicating a slower but still robust expansion in the services sector. The moderation was partly attributed to the impact of the Middle East conflict on domestic demand.

Key Valuation Ratios

Broad Indices	P/E	P/B	Dividend Yield
Nifty 50	21.13	3.28	1.29
Nifty Midcap 100	35.76	4.57	0.71
Nifty Smallcap 100	28.70	3.28	0.71

Source: NSE

Domestic Equity Market Update

- Domestic equity markets rebounded after recording losses over the previous six weeks, with benchmark indices BSE Sensex and Nifty 50 rising by 5.77% and 5.89%, respectively.
- Domestic equity markets advanced on improved global risk sentiment after the U.S. and Iran announced a two-week ceasefire. This development led to a pullback in the dollar and a decline in crude oil prices from recent highs, easing concerns over potential supply disruptions in the region's critical energy corridor and supporting domestic equities. Market sentiment was further bolstered by expectations of a normal monsoon, strengthening hopes of sustained rural demand and providing support to the broader consumption outlook. However, sentiment remained cautious as reports of fresh Israeli strikes on Lebanon raised concerns over the durability of the fragile U.S.-Iran ceasefire.
- On the BSE sectoral front, BSE Realty surged 12.86% after the RBI's Monetary Policy Committee unanimously voted to keep the benchmark repo rate unchanged at 5.25% in its Apr 2026 meeting. The pause provides interest rate stability, which is supportive for the housing sector by preserving affordability and enabling developers and homebuyers to plan over the long term. BSE Auto rallied 10.30% after crude oil prices softened following the announcement of a two-week ceasefire between the U.S. and Iran, which helped ease concerns around elevated fuel costs and inflationary pressures.

Broad Indices	10-Apr-26	Week Ago	Month Ago	6 Months Ago	Year Ago
1 Year AAA Corporate Bond	7.41%	7.57%	7.11%	6.87%	7.28%
3 Year AAA Corporate Bond	7.31%	7.71%	7.12%	6.73%	7.24%
5 Year AAA Corporate Bond	7.43%	7.72%	7.15%	6.93%	7.18%
10 Year AAA Corporate Bond	7.56%	7.81%	7.34%	7.09%	7.02%
1 Year G-Sec ^[1]	5.83%	5.95%	5.65%	5.64%	6.19%
3 Year G-Sec	6.37%	6.66%	6.05%	5.86%	6.21%
5 Year G-Sec	6.53%	6.88%	6.35%	6.14%	6.26%
10 Year G-Sec	6.91%	7.13%	6.67%	6.54%	6.45%
Forex Reserve (\$ in billion)	697.12*	688.06**	716.81@	697.78@@	676.27@@@

Domestic Debt Market Update

- Bond yields eased sharply following a two-week truce between the U.S. and Iran, while the RBI left its policy rate unchanged at its Apr 2026 meeting and maintained a neutral policy stance.
- Yield on the 10-year benchmark paper (6.48% GS 2035) fell by 22 bps to close at 6.91% from the previous week's close of 7.13%.
- Reserve Bank of India conducted the auction of 91 days, 182 days and 364 days Treasury Bills for an aggregate amount of Rs. 24,000 crore for which the full amount was accepted, and the cut-off rate stood at Rs. 98.6943 (YTM: 5.3064%), Rs. 97.3166 (YTM: 5.5299%) and Rs. 94.6859 (YTM: 5.6278%), respectively.
- Reserve Bank of India conducted the auction of one government security namely 6.48% GS 2035, for a notified amount of Rs. 34,000 crore, for which full amount was accepted. The cut-off price/implicit yield at cut-off for 6.48% GS 2035 stood at Rs. 96.67/6.9655%.

Global Commodity Update

Commodities	10-Apr-26	% Change (WoW)	% Change (YoY)	% Change (YTD)
NYMEX Crude Oil (\$/barrel)	95.55	-14.69	58.72	66.49
Brent Crude Oil (\$/barrel)	94.26	-13.71	48.68	54.78
Gold (\$/ounce)	4,747.49	1.54	49.58	10.05
Silver (\$/ounce)	75.88	3.95	143.22	6.48

Source: Refinitiv

Currencies Update

Currency	10-Apr-26	Week Ago	Month ago	6 Months Ago	Year Ago
U.S. Dollar	93.07	92.69	91.95	88.75	86.19
GBP	125.25	122.25	123.34	118.56	111.76
Euro	109.07	106.73	106.74	103.11	96.51
Yuan	13.63	13.47	13.37	12.44	11.78

Source: Refinitiv

Global Equity Market Performance

Country/Region	Indices	10-Apr-26	% Change (WoW)	% Change (YoY)	% Change (YTD)
MSCI	MSCI Emerging Market Price Index	1,547	7.88	55.77	10.19
MSCI	MSCI International World Price Index	4,474	3.72	29.13	0.98
U.S.	Russell 1000	3,717	3.38	29.28	-0.43
U.S.	Nasdaq composite	22,903	4.68	39.76	-1.46
U.K.	FTSE	10,601	1.57	33.96	6.74
France	CAC 40	8,260	3.73	15.91	1.35
Germany	DAX	23,804	2.74	15.76	-2.80
Japan	Nikkei 225	56,924	7.15	64.48	13.08
China	Shanghai Composite	3,986	2.74	23.66	0.44
Hong Kong	Hang Seng	25,894	3.09	25.20	1.03
Singapore	Straits Times	4,989	0.85	39.45	7.39
Russia	RTS Index	Closed	NA	NA	NA
Brazil	Sao Paulo Se Bovespa	197,324	4.93	56.17	22.47

Source: Refinitiv

Global Bond Yield Update

Indicators	10-Apr-26	Week ago	Month ago	6 Months Ago	Year ago
U.S. 10 Year Bond yield (%)	4.32	4.35	4.14	4.05	4.39
U.K. 10 Year Bond yield (%)	4.84	4.85	4.56	4.67	4.64
German 10 Year Bond yield (%)	3.07	3.00	2.85	2.64	2.58
China 10 Year Bond yield (%)	1.82	1.82	1.81	1.86	1.65

Source: Refinitiv

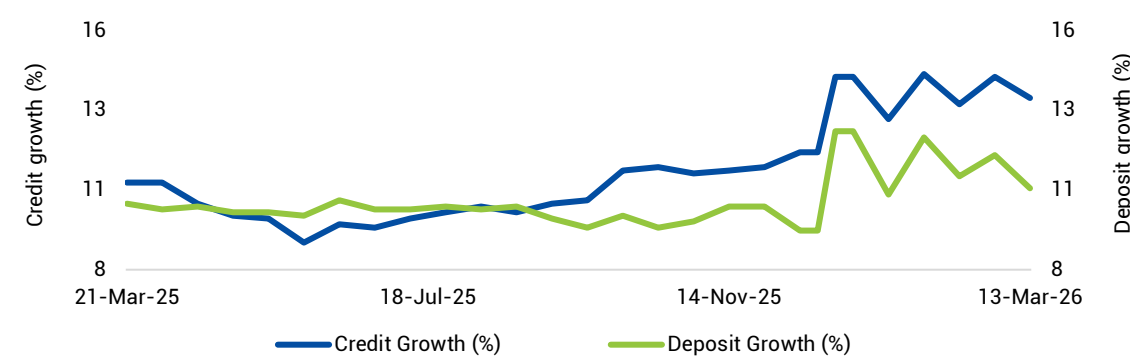
Global Economic Calendar

Economic Events	Release date	Actual	Consensus	Previous
Germany Industrial Output MM Feb 2026	9-Apr	-0.30%	0.70%	0.00%
U.S. GDP Final Q4 2025	9-Apr	0.50%	0.70%	0.70%
China CPI YY Mar 2026	10-Apr	1.00%	1.20%	1.30%
U.S. CPI YY, NSA Mar 2026	10-Apr	3.30%	3.30%	2.40%

Source: Refinitiv

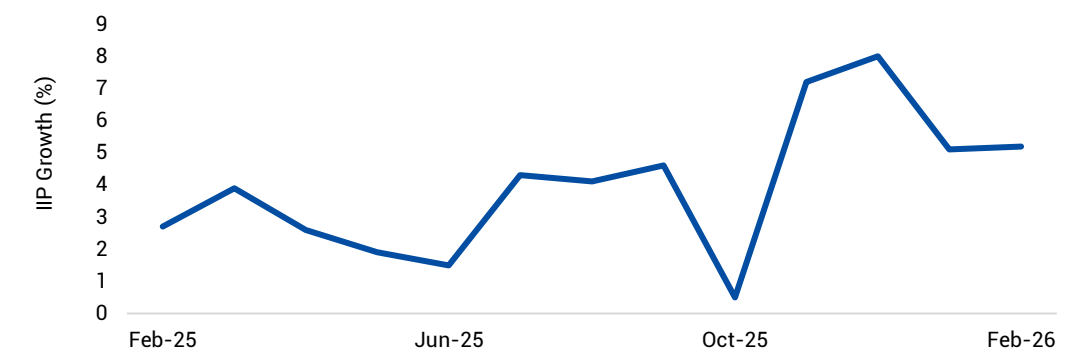
Macro Economic Performance of India

Credit growth vs Deposit growth



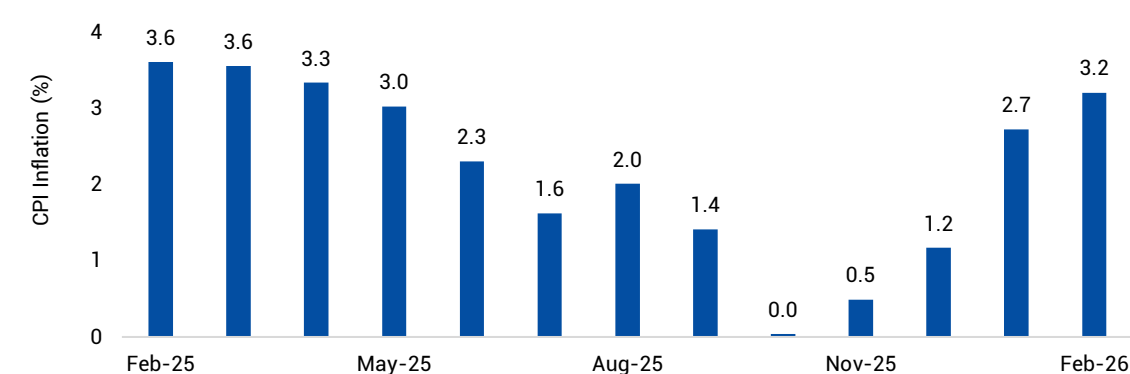
Source: Refinitiv

IIP Growth (%)



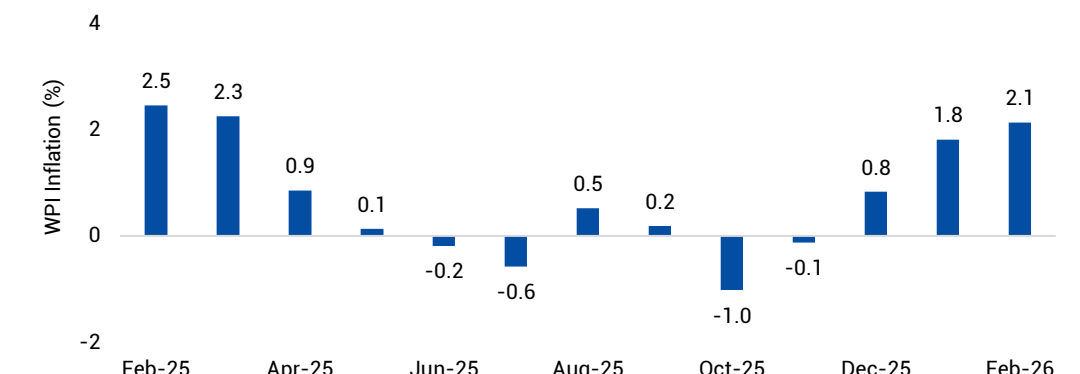
Source: Refinitiv

Retail inflation movement



Source: Refinitiv

Wholesale price inflation movement



Source: Refinitiv

This document has been prepared by Edelweiss Asset Management Limited (the AMC) in conjunction with ICRA Analytics Limited based on internal data, publicly available information and other sources believed to be reliable. Any calculations made are approximations, meant as guidelines only, which you must confirm before relying on them. The information contained in this document is for general purposes only. The document is given in summary form and does not purport to be complete. The document does not have regard to specific investment objectives, financial situation and the particular needs of any specific person who may receive this document. Sector(s) / Stock(s) / Issuer(s) mentioned above are for the purpose of explanation and should not be construed as recommendation. Investors are requested to consult their financial, tax and other advisors before taking any investment decision(s). The information/data herein alone are not sufficient and should not be used for the development or implementation of an investment strategy. The same should not be construed as investment advice to any party. The statements contained herein are based on our current views and involve known and unknown risks and uncertainties that could cause actual results, performance or events to differ materially from those expressed or implied in such statements. Neither the AMC and Edelweiss Mutual Fund (the Fund) nor any person connected with them, accepts any liability arising from the use of this document. The recipient(s) before acting on any information herein should make his/her/their own investigation and seek appropriate professional advice and shall alone be fully responsible / liable for any decision taken on the basis of information contained herein. Past performance may not be sustained in the future.

Mutual fund investments are subject to market risks, read all scheme related documents carefully.

ICRA Analytics Disclaimer: All information contained in this document has been obtained by ICRA Analytics Limited from sources believed by it to be accurate and reliable. Although reasonable care has been taken to ensure that the information herein is true, such information is provided 'as is' without any warranty of any kind, and ICRA Analytics Limited in particular, make no representation or warranty, express or implied, as to the accuracy, timeliness or completeness of any such information. All information contained herein must be construed solely as statements of opinion, and ICRA Analytics Limited shall not be liable for any losses incurred by users from any use of this document or its contents in any manner. Opinions expressed in this document are not the opinions of ICRA Analytics Limited's holding company, ICRA Limited (ICRA), and should not be construed as any indication of credit rating or grading of ICRA for any instruments that have been issued or are to be issued by any entity.