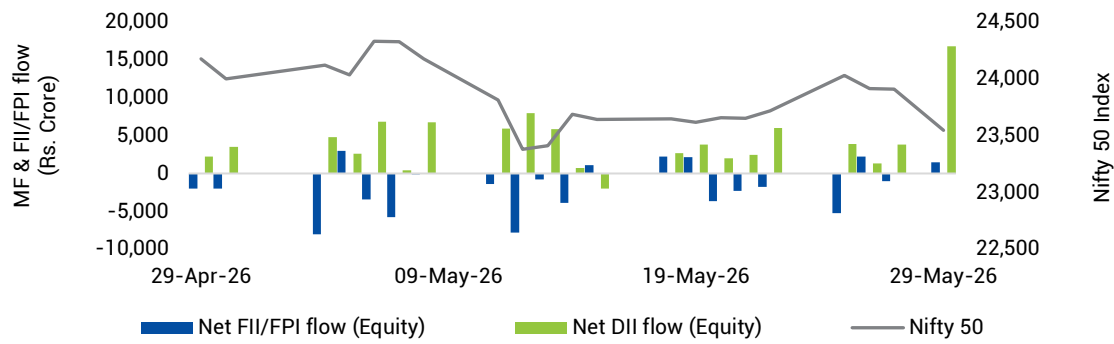


Macro Economic Release

Indicators	Actual	Consensus	Previous
Imports (\$ billion) (Apr 2026)	71.94	NA	59.59
Exports (\$ billion) (Apr 2026)	43.56	NA	38.92
Trade Deficit (\$ billion) (Apr 2026)	28.38	NA	20.67
Fiscal Deficit % of BE (Feb 2026)	80.38	NA	62.97

Source: Refinitiv

FII and DII Investment vs Nifty 50



Source: NSDL, SEBI & NSE

Indian Equity Market Performance

Broad Indices	29-May-26	% Change (WoW)	% Change (YoY)	% Change (YTD)
BSE Sensex	74,776	-0.85	-8.20	-12.26
Nifty 50	23,548	-0.72	-4.86	-9.88
BSE 100	25,059	-0.39	-3.40	-8.36
Nifty 500	22,657	0.03	-0.64	-5.09
Nifty Midcap 100	61,724	0.54	7.50	2.05
Nifty Small cap 100	18,139	1.02	1.43	2.40

Sector Indices	29-May-26	% Change (WoW)	% Change (YoY)	% Change (YTD)
BSE AUTO	57,983	1.21	10.82	-7.31
BSE Bankex	61,131	0.37	-3.20	-8.43
BSE CD	57,686	-0.30	-0.45	-3.86
BSE CG	80,819	3.19	13.69	20.42
BSE FMCG	18,265	-1.54	-10.06	-10.23
BSE HC	46,806	-0.98	9.86	6.86
BSE IT	28,165	0.36	-23.66	-23.33
BSE METAL	43,766	0.96	42.28	18.89
BSE Oil & Gas	26,741	-1.41	-1.07	-6.85
BSE Power	8,383	3.73	23.19	28.91
BSE PSU	20,938	-0.17	6.46	1.80
BSE Realty	6,115	1.17	-16.91	-10.16
BSE Teck	14,930	-0.31	-16.57	-19.34

Source: BSE & NSE

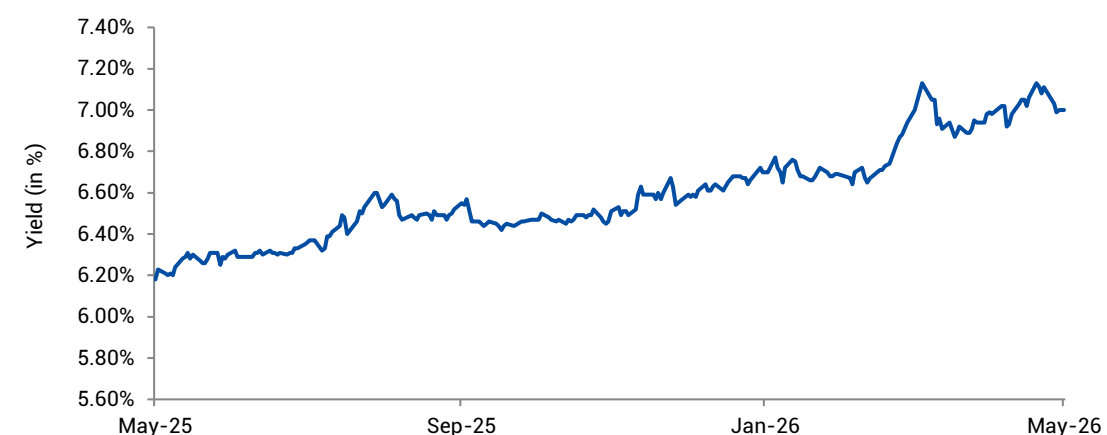
Indian Debt Market Indicators

Broad Indices	29-May-26	Week Ago	Month Ago	6 Months Ago	Year Ago
Call Rate	5.47%	5.37%	5.16%	5.56%	5.78%
T-Repo	5.35%	5.26%	5.08%	5.41%	5.72%
Repo	5.25%	5.25%	5.25%	5.50%	6.00%
Reverse Repo	3.35%	3.35%	3.35%	3.35%	3.35%
3 Month CP	7.32%	7.45%	6.50%	5.90%	6.18%
1 Year CP	8.02%	7.99%	7.42%	6.45%	6.52%
3 Month CD	7.53%	7.45%	6.63%	5.89%	6.30%
1 Year CD	7.83%	7.96%	7.20%	6.53%	6.52%

Source: CCIL, Refinitiv

Source: CCIL, Refinitiv * As on May 22, 2026; ** As on May 15, 2026; @ As on Apr 24, 2026; @@ As on Nov 28, 2025; @@@ As on May 23, 2025

10 - Year benchmark G-Sec Movement



Source: Refinitiv

Macro Economic Update

- The Quad comprising India, the US, Japan and Australia plans to mobilise up to \$20 billion in public and private funding to strengthen critical minerals supply chains across mining, processing and recycling. The initiative aims to reduce import dependence and build more resilient and diversified supply networks for materials critical to advanced technologies and industrial growth through coordinated policies and financing mechanisms.
- The Union Cabinet approved a Rs. 25,000 crore Sarthak-PDS scheme to modernise the public distribution system through technology-driven reforms, improving efficiency, transparency, and foodgrain delivery.
- According to the RBI report, India's net household financial savings rose to 7% of Gross National Disposable Income (GNDI) in FY25 from 5.8% in FY24, driven by a sharp decline in financial liabilities. Gross domestic savings increased to 34.2% of GNDI, with financial choices still heavily led by bank deposits.
- Indian traders have cancelled about 25,000 tonnes of soymeal export contracts and shifted to importing around 80,000 tonnes of soybeans from African countries as a sharp rise in domestic prices and tight supplies reversed trade flows. The surge in soybean prices, up over 40% in a month, has made exports unviable and is likely to push India's soybean imports to record levels this year.

Key Valuation Ratios

Broad Indices	P/E	P/B	Dividend Yield
Nifty 50	20.27	3.21	1.35
Nifty Midcap 100	29.76	4.83	0.62
Nifty Smallcap 100	30.54	3.52	0.67

Source: NSE

Domestic Equity Market Update

- Domestic equity markets declined after posting gains in the previous week, with the benchmark indices BSE Sensex and Nifty 50 falling by 0.85% and 0.72%, respectively.
- Domestic equity markets declined amid ongoing uncertainty over a potential U.S.-Iran peace deal and its timeline. Sentiment weakened after the U.S. forces struck missile launch sites in Iran and targeted boats attempting to deploy mines, diminishing expectations of an imminent resolution. Losses deepened as the MSCI May 2026 index rebalancing came into effect, triggering adjustments by passive funds tracking MSCI indices and further heightening market volatility.
- On the BSE sectoral front, BSE FMCG index declined by 1.54% as defensive sectors underperformed, with FMCG stocks ending lower amid a shift in investor preference toward cyclical and growth-oriented sectors. The decline was further driven by heavy institutional selling linked to the MSCI index rebalancing, while rising geopolitical tensions and a weakening rupee added to the downward pressure. BSE Power rallied 3.73% supported by strong electricity demand, robust order inflows, and improved earnings visibility across the sector. Companies benefited from increasing investments in renewable energy, grid expansion, and transmission infrastructure, while rising demand from emerging segments such as data centres further strengthened growth prospects. The rally was also underpinned by healthy order books and capacity expansion plans, which boosted investor confidence and led to broad-based buying interest in power sector stocks.

Broad Indices	29-May-26	Week Ago	Month Ago	6 Months Ago	Year Ago
1 Year AAA Corporate Bond	7.80%	7.82%	7.55%	6.96%	6.92%
3 Year AAA Corporate Bond	7.66%	7.75%	7.44%	6.81%	6.79%
5 Year AAA Corporate Bond	7.55%	7.64%	7.48%	6.99%	6.85%
10 Year AAA Corporate Bond	7.74%	7.80%	7.71%	7.26%	6.99%
1 Year G-Sec	6.13%	6.16%	5.80%	5.60%	5.67%
3 Year G-Sec	6.59%	6.80%	6.45%	5.82%	5.73%
5 Year G-Sec	6.82%	6.94%	6.76%	6.22%	5.84%
10 Year G-Sec	7.01%	7.09%	6.99%	6.55%	6.18%
Forex Reserve (\$ in billion)	681.38*	688.89**	698.49@	686.23@@	692.72@@@

Domestic Debt Market Update

- Bond yields softened as crude oil prices declined on expectations of a potential U.S.-Iran peace agreement that could reopen a key supply chokepoint, even as reports of fresh escalations in the conflict persisted.
- Yield on the 10-year benchmark paper (6.48% GS 2035) fell by 8 bps to close at 7.01% from the previous week's close of 7.09%.
- Reserve Bank of India conducted the auction of 91 days, 182 days and 364 days Treasury Bills for an aggregate amount of Rs. 24,000 crore for which the full amount was accepted, and the cut-off rate stood at Rs. 98.6325 (YTM: 5.5611%), Rs. 97.2199 (YTM: 5.7349%) and Rs. 94.3300 (YTM: 6.0273%), respectively.
- Reserve Bank of India conducted the auction of two government securities namely 6.68% GS 2040 and 7.43% GS 2076 for a notified amount of Rs. 28,000 crore, for which full amount was accepted. The cut-off price/implicit yield at cut-off for 6.68% GS 2040 and 7.43% GS 2076 stood at Rs. 94.22/7.3439% and Rs. 96.44/7.7100%.

Global Commodity Update

Commodities	29-May-26	% Change (WoW)	% Change (YoY)	% Change (YTD)
NYMEX Crude Oil (\$/barrel)	87.50	-9.70	43.70	52.47
Brent Crude Oil (\$/barrel)	91.99	-11.58	43.49	51.05
Gold (\$/ounce)	4,535.82	0.60	36.79	5.14
Silver (\$/ounce)	75.26	-0.31	125.67	5.61

Source: Refinitiv

Currencies Update

Currency	29-May-26	Week Ago	Month ago	6 Months Ago	Year Ago
U.S. Dollar	95.00	95.69	94.85	89.35	85.39
GBP	127.86	128.48	127.79	118.27	115.17
Euro	110.76	111.02	110.76	103.60	97.10
Yuan	14.04	14.08	13.87	12.63	11.88

Source: Refinitiv

Global Equity Market Performance

Country/Region	Indices	29-May-26	% Change (WoW)	% Change (YoY)	% Change (YTD)
MSCI	MSCI Emerging Market Price Index	1,752	3.92	49.74	24.76
MSCI	MSCI International World Price Index	4,865	1.32	25.95	9.80
U.S.	Russell 1000	4,119	1.48	27.31	10.35
U.S.	Nasdaq composite	26,973	2.39	40.66	16.05
U.K.	FTSE 100	10,409	-0.54	19.42	4.81
France	CAC 40	8,183	0.83	5.19	0.42
Germany	DAX	25,105	0.87	4.89	2.51
Japan	Nikkei 225	66,330	4.72	72.58	31.76
China	Shanghai Composite	4,069	-1.08	20.96	2.51
Hong Kong	Hang Seng	25,182	-1.65	6.83	-1.75
Singapore	Straits Times	5,038	-0.60	28.62	8.43
Russia	RTS Index	Closed	NA	NA	NA
Brazil	Sao Paulo Se Bovespa	173,787	-1.37	25.45	7.86

Source: Refinitiv

Global Bond Yield Update

Indicators	29-May-26	Week ago	Month ago	6 Months Ago	Year ago
U.S. 10 Year Bond yield (%)	4.45	4.57	4.42	4.02	4.42
U.K. 10 Year Bond yield (%)	4.82	4.91	5.07	4.44	4.65
German 10 Year Bond yield (%)	2.94	3.04	3.11	2.69	2.51
China 10 Year Bond yield (%)	1.73	1.75	1.75	1.83	1.72

Source: Refinitiv

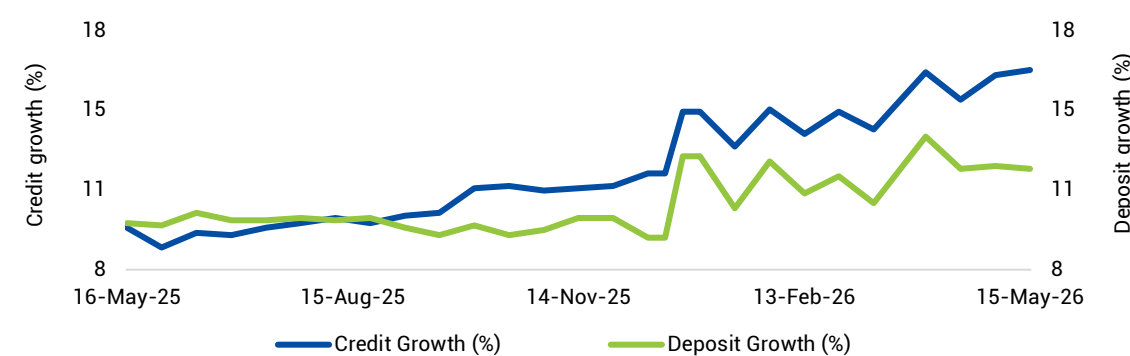
Global Economic Calendar

Economic Events	Release date	Actual	Consensus	Previous
Japan CPI, Overall Tokyo May 2026	28-May	1.40%	NA	1.50%
U.S. Core PCE Price Index YY Apr 2026	28-May	3.30%	3.30%	3.20%
Japan Unemployment Rate Apr 2026	28-May	2.50%	2.70%	2.70%
Germany Unemployment Rate SA May 2026	29-May	6.30%	6.40%	6.40%

Source: Refinitiv

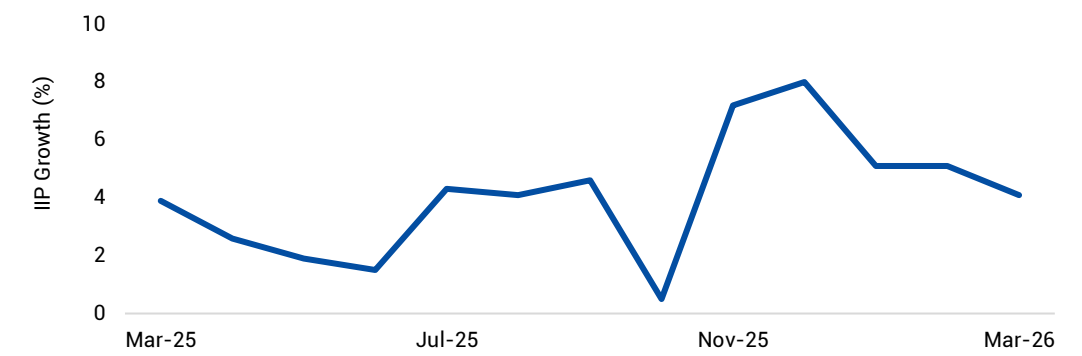
Macro Economic Performance of India

Credit growth vs Deposit growth



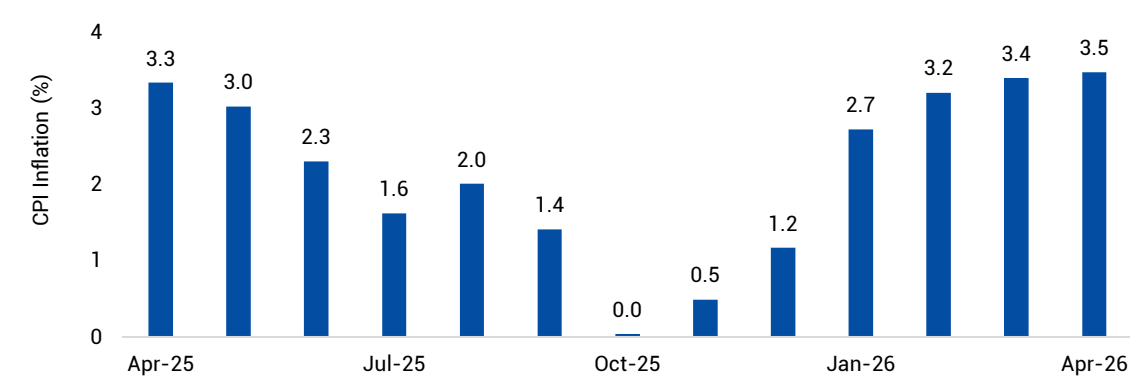
Source: Refinitiv

IIP Growth (%)



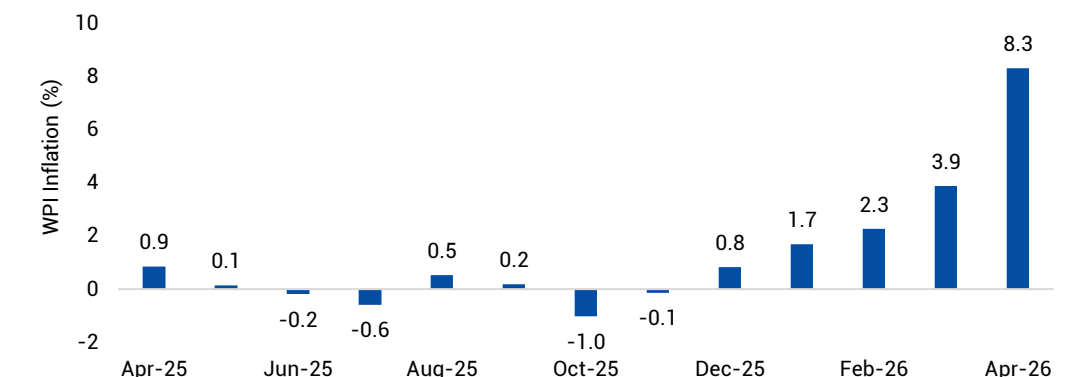
Source: Refinitiv

Retail inflation movement



Source: Refinitiv

Wholesale price inflation movement



Source: Refinitiv

This document has been prepared by Edelweiss Asset Management Limited (the AMC) in conjunction with ICRA Analytics Limited based on internal data, publicly available information and other sources believed to be reliable. Any calculations made are approximations, meant as guidelines only, which you must confirm before relying on them. The information contained in this document is for general purposes only. The document is given in summary form and does not purport to be complete. The document does not have regard to specific investment objectives, financial situation and the particular needs of any specific person who may receive this document. Sector(s) / Stock(s) / Issuer(s) mentioned above are for the purpose of explanation and should not be construed as recommendation. Investors are requested to consult their financial, tax and other advisors before taking any investment decision(s). The information/data herein alone are not sufficient and should not be used for the development or implementation of an investment strategy. The same should not be construed as investment advice to any party. The statements contained herein are based on our current views and involve known and unknown risks and uncertainties that could cause actual results, performance or events to differ materially from those expressed or implied in such statements. Neither the AMC and Edelweiss Mutual Fund (the Fund) nor any person connected with them, accepts any liability arising from the use of this document. The recipient(s) before acting on any information herein should make his/her/their own investigation and seek appropriate professional advice and shall alone be fully responsible / liable for any decision taken on the basis of information contained herein. Past performance may not be sustained in the future.

Mutual fund investments are subject to market risks, read all scheme related documents carefully.

ICRA Analytics Disclaimer: All information contained in this document has been obtained by ICRA Analytics Limited from sources believed by it to be accurate and reliable. Although reasonable care has been taken to ensure that the information herein is true, such information is provided 'as is' without any warranty of any kind, and ICRA Analytics Limited in particular, make no representation or warranty, express or implied, as to the accuracy, timeliness or completeness of any such information. All information contained herein must be construed solely as statements of opinion, and ICRA Analytics Limited shall not be liable for any losses incurred by users from any use of this document or its contents in any manner. Opinions expressed in this document are not the opinions of ICRA Analytics Limited's holding company, ICRA Limited (ICRA), and should not be construed as any indication of credit rating or grading of ICRA for any instruments that have been issued or are to be issued by any entity.